

PROGRAMME
2008

HOP
GALLERY

www.hopgallery.com

Tel: 01273 487744 **Mob:** 07740 424949

E-mail: angie.osborne@btinternet.com

Hop Gallery, Star Brewery, Castle Ditch Lane,
Lewes, East Sussex BN7 1YJ



HOP

FACES, FIGURES, FEET *Thurs 3rd July - Tues 8th July*

M. Spence



LEWES & THE DOWNS

Sun 6th April - Sat 19th April

Through this retrospective celebration exhibition, **Mary Hart** displays a pleasing body of watercolours spanning twenty years. For Mary, this is, her 'Swan Song'. Open daily 10.30am-5pm.



RACHAEL PLUMMER - PAINTINGS

Sat 26th April - Sat 10th May

Abstract acrylic paintings inspired by small areas of local wilderness and a preoccupation with aviation. An opportunity to enjoy her latest collection of work. Open daily 10am-5pm. Closed Sundays.

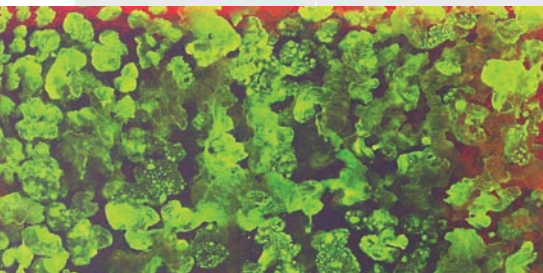


SNOOKER IN THE FRAME 2 - TOM WALKER

Thurs 5th June - Tues 17th June

Fifty images from this pastel artist whose projected maximum break is 147 explorations of snooker. Already featured four times by the BBC during 2006/07 UK and 2007/08 world championships. "..... lively and intriguing in equal measure." Clive Everton.

Open daily 10am-5pm.

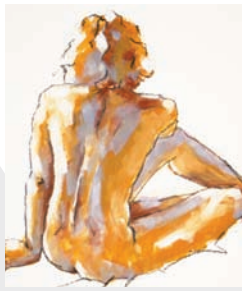


LEONARDO'S WALL - IRENE RUNAYKER

Thurs 19th June - Sat 28th June

Leonardo advised artists to "draw the drips of rain and patches of plaster on walls..." Within this, her latest body of work, **Runayker** tackles the task of depicting this seemingly random occurrence to walk a tightrope between accuracy, precision and casual abandon.

Mon-Fri & Sun 11am-5.30pm. Sat 10.30am-5pm.



FACES, FIGURES, FEET

Thurs 3rd July - Tues 8th July

Using charcoal, oils and acrylics, **Meryl Stringell**, **Nicola King** and **Lindy Dunbar** deliver striking paintings and drawings from the life model; this collection of new work sits superbly alongside intriguing sculptures of footwear in papier maché by **Alison Stringell**. Open daily 10am-5pm.



MELTDOWN

Thurs 10th July - Tues 15th July

Coming to Lewes as part of her Sussex and ongoing UK tour, **Tone Holmen**, shows how melting glaciers are causing dramatic effects on the worlds' coastline. Using maps as the foundation for her work these considerations are explored through drawings, paintings and sculpture. Open daily 10.30am-5pm.



VAL WHITE'S PAINT & PRINT SHOW

Thurs 17th July - Tues 29th July

Paintings, mixed media, monoprints and collagraphs in a variety of subjects including the popular parties and vibrant flower pieces. Shown alongside new rich black and white images. Open daily 10.30am-5pm. Closed for lunch 1.30pm-2.15pm. Open Sundays 11.30am-4.15pm.



THE CELTIC SCENE - MARTIN LEWIS

Thurs 31st July - Tues 5th Aug

Romantic landscapes of mood reflecting a sense of place based on the artists' Welsh homeland and recent travels in Scotland and Ireland.

Open daily 10am-6pm.



TAKE SIX

Thurs 21st Aug - Tues 2nd Sept

Six artists, six differing view points come together in this exciting eclectic exhibition. Sculpture, paintings, collage and photography. Part of Artwave 2008. **Open daily 10am-5pm. Closed Wed 27th Aug.**



GOOD IMPRESSIONS

PADDOCK PRINTMAKERS

Thurs 4th Sept - Tues 16th Sept

Exhibited will be the printmakers own individual images made as linocuts, woodcuts, engravings, acrylic dry-points, collagraphs and mixed media for sale both framed and unframed. Blocks and processes used will be featured. A member of the group will be available to explain the various techniques used. **Open daily 10am-5pm.**



PRINTS & DRAWINGS - VICTOR BOWLEY

Thurs 18th Sept - Mon 29th Sept

An all black and white non figurative exhibition based on simple forms. Exploring the mix of order and chance. **Open daily 10.30am-5pm.**



CONTRASTING COLOUR COLLECTION

Thurs 2nd Oct - Tues 14th Oct

Three local artists, **Marcelle Murray** - photographer, and sisters **Vicky Mappin** - botanical artist and **Lucinda Rendall** - mixed media, deliver this captivating vibrant contrasting collection of colour and mixed media, landscapes, local scenes and fruit, flowers and vegetables. **Open daily 10am-5pm.**



STAR GROUP ANNUAL EXHIBITION

Thurs 16th Oct - Tues 21st Oct

This established group exhibit their most recent works. In this collection you will find accomplished figurative art. **Open daily 10am-5pm.**



A PASTEL ODYSSEY

Thurs 23rd Oct - Tues 28th Oct

Under the wing of renowned pastel artist **Tom Walker** this small group show what endless possibilities there are to be found in the use of pastels. Delivering to the viewer an exciting collection of wonderful abstracts, still life, landscapes, fruit and floral images. Artists will be working in the gallery and taster sessions are available to the public. See work being created or create some yourself. **Open daily 10am-5pm.**



WILSON, WHAMOND, WILSON PAINTINGS FROM LIFE

Thurs 30th Oct - Tues 11th Nov

An inspiring mix for this show with three differing artists who have collaborated to produce an intriguing collection of work including figurative, still life and landscape; working mainly in oils.

Open daily 10.30am-5.30pm.



DAVID ARMITAGE, DAVID HARRISON, CHRIS MANSELL, SAMUEL PARADELA

Thurs 13th Nov - Tues 25th Nov

Sharing a common understanding of contemporary abstract art these four artists produce a dynamic and exhilarating experience through their divergence of style and differing approaches.

Open daily 10am-5pm.



HOP GALLERY CHRISTMAS CRAFT SHOW

Sat 29th Nov - Sat 20th Dec

A large display of beautiful contemporary art, crafts, jewellery and much more besides at affordable prices. Not just for buying but for giving as well.

All by local and regional artists and crafts people.

Open Mon-Sat 10.30am-5pm. Sun 11am-4pm.

***** The gallery will be open for late night shopping on Thurs 4th Dec until 8pm.**



Hop Gallery, Star Brewery, Castle Ditch Lane, Lewes, East Sussex BN7 1YJ

Lewes is approximately 1 hour by rail from London Victoria and 15 minutes from Brighton.

Good road connections from A275, M23 and M25. www.hopgallery.com www.starbrewery.co.uk